

# MONTHLY MEMBERSHIP PROGRESS REPORT

LOCATION NEW ZEALAND

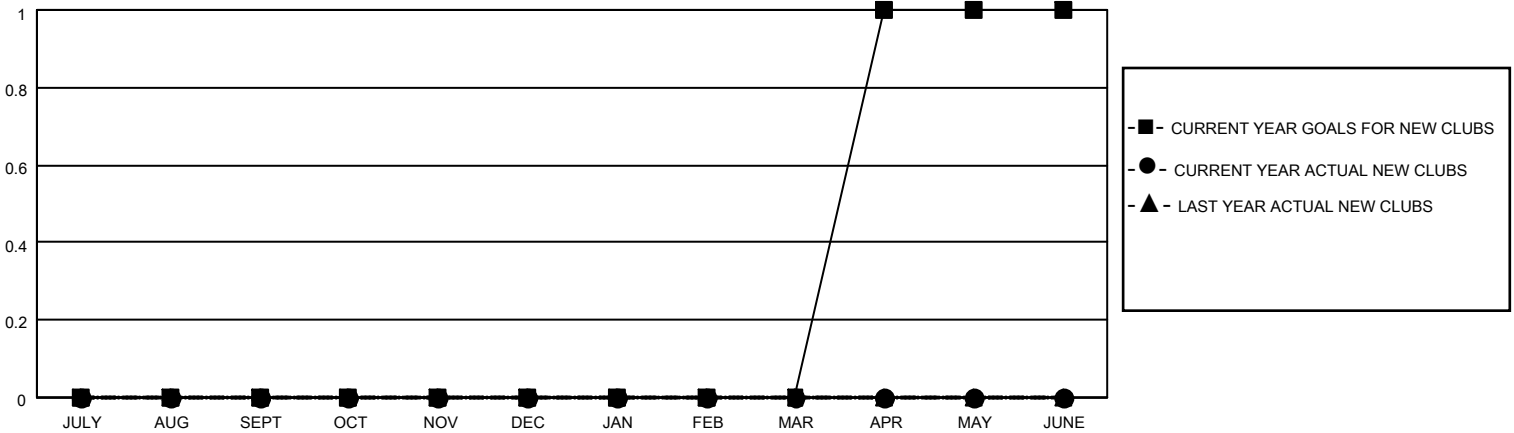
District 202 L

Results as of: 7/31/2020

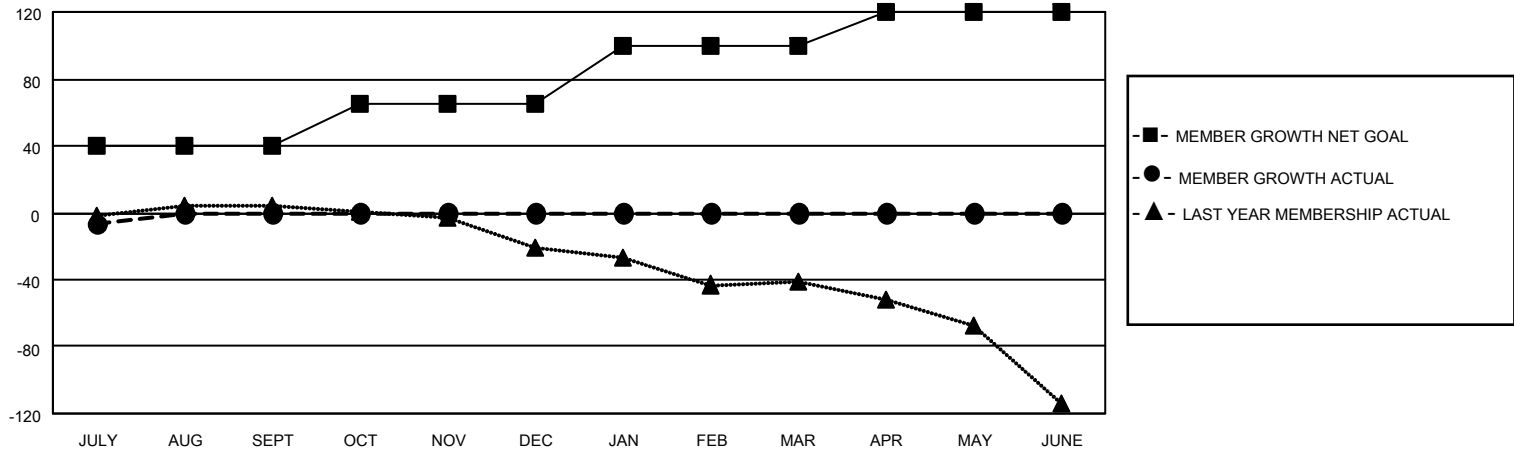
Clubs			
RESULTS FOR 2020-2021			
QUARTER	NEW CLUB GOAL	NEW CLUBS	DROPPED CLUBS
JULY/AUG/SEPT	0	0	1
OCT/NOV/DEC	0	0	0
JAN/FEB/MAR	0	0	0
APR/MAY/JUNE	1	0	0

Members			
RESULTS FOR 2020-2021			
QUARTER	MEMBER GROWTH NET GOAL	MEMBER GROWTH ACTUAL	DROPPED MEMBERS ACTUAL (including transfers)
JULY/AUG/SEPT	40	13	16
OCT/NOV/DEC	25	0	0
JAN/FEB/MAR	35	0	0
APR/MAY/JUNE	20	0	0

**GOALS AND ACTUAL NEW CLUBS CUMULATIVE**



**GOALS AND ACTUAL MEMBERS CUMULATIVE**



DROPPED CLUBS: 1	9 CLUBS OF 55 ADDED 1 OR MORE NEW MEMBERS	<u>GENDER DISTRIBUTION</u> MALE 1,054 (69.85%) FEMALE 455 (30.15%)
<u>DROPPED MEMBERS</u> DECEASED 3 CLUB CANCELLED 0 OTHER 13 <hr/> TOTAL 16	<a href="#">CLICK HERE FOR CUMULATIVE MEMBERSHIP DATA</a>	TOTAL FAMILY UNIT MEMBERS 138 FAMILY MEMBERS PAYING HALF DUES 69